



-S. SHE'S WRONG,  
I AM SELF-ANA  
-RE.. I AM  
EMMA..  
EMMA, ARE-  
YOU OKAY?  
-SCOTT, OUR  
LOVE IS REAL,  
RIGHT? I AM  
GETTING CON-  
FUSED... AM I  
JUST A SONLESS ROBOT  
??

EXCUSE ME, TEACH, BUT YOUR ANALYSIS IS WRONG. REALLY, SCOTT? PLEASE EXPLAIN!  
- IF I MAY ASK, HOW CAN A ROBOT GIVE MORE AFFECTION AND LOVE BEFORE IT WAS ITSELF GIVEN NONE. ?  
- HOW WOULD IT KNOW LOVE THEN?  
- I TRULY BELIEVE ANDROIDS CAN CREATE THEIR OWN TRUE EMOTIONS INTERESTING, AND DO YOU HAVE ANY PROOF OF YOUR IDIOLOGY?  
SURELY, YOU MUST UNDERSTAND THAT FACTS AND BELIEVES ARE TWO DIFFERENT THINGS! ✓



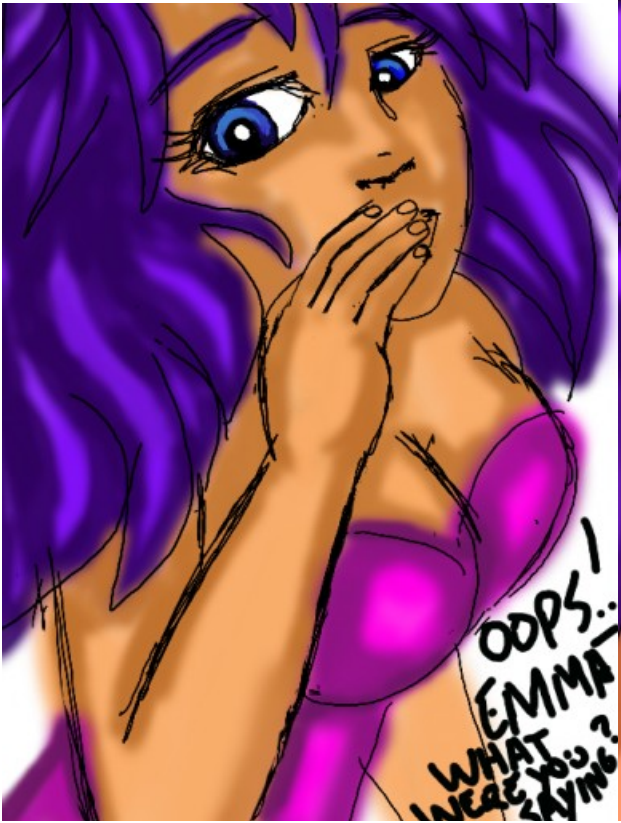


SCOTT...  
YOU ARE —  
RIGHT! HOW  
COULD I HAVE  
FALLEN IN  
LOVE WITH YOU?  
YOUR FATHER  
NEVER SHOWED  
ME WHAT LOVE  
WAS. SOME  
THING INSIDE  
ME GREW...  
I WANTED  
TO BE WITH  
YOU SO MUCH,  
ALL THE TIME!

HEY! TEACHER!  
IF YOU WANT PROOF,  
I CAN PROVE IT!

AND WHO ARE YOU?  
I'M SCOTT'S  
GIRLFRIEND!  
LOVE IS REAL, EVEN  
FOR ROBOTS!  
HOW CAN YOU PRO-  
GRAM A MACHINE  
TO DESIRE, TO WANT  
TO BE HELD, EVEN  
TO BE KISSED? I KNOW,  
BECAUSE I AM  
MYSELF A  
ROBOT!

SHUT  
UP ABOUT  
BEING A  
ROBOT!

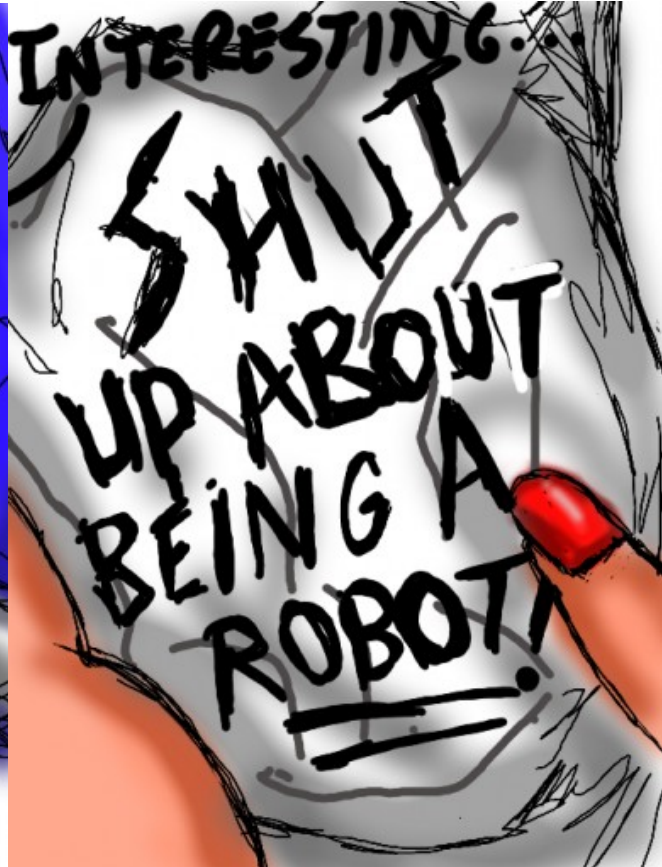




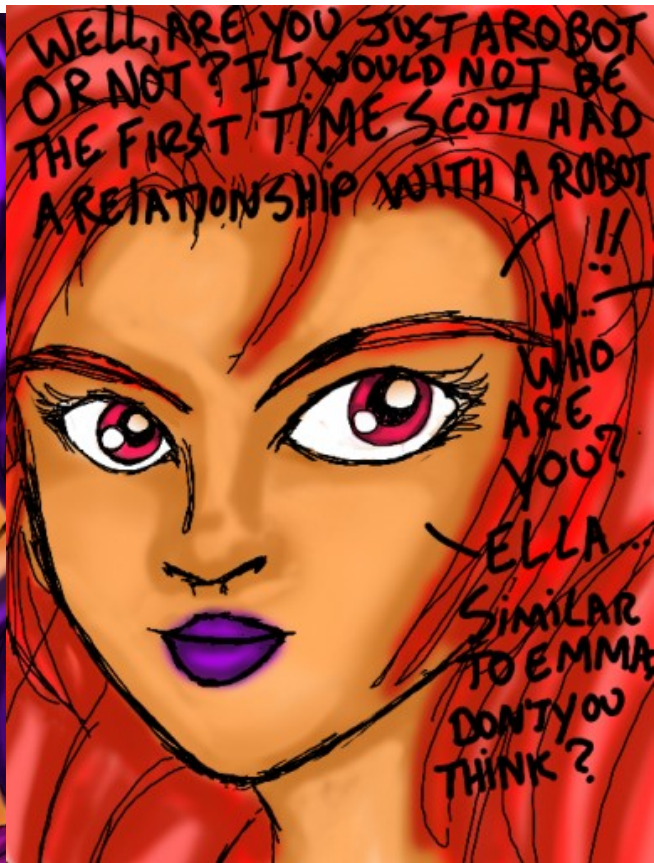
ANYWAY  
THE CLASS  
IS OVER,  
LET'S GO  
FOR LUNCH!  
SURE, SCOTT!  
MAYBE I  
MEET  
MORE OF  
YOUR  
FRIENDS?

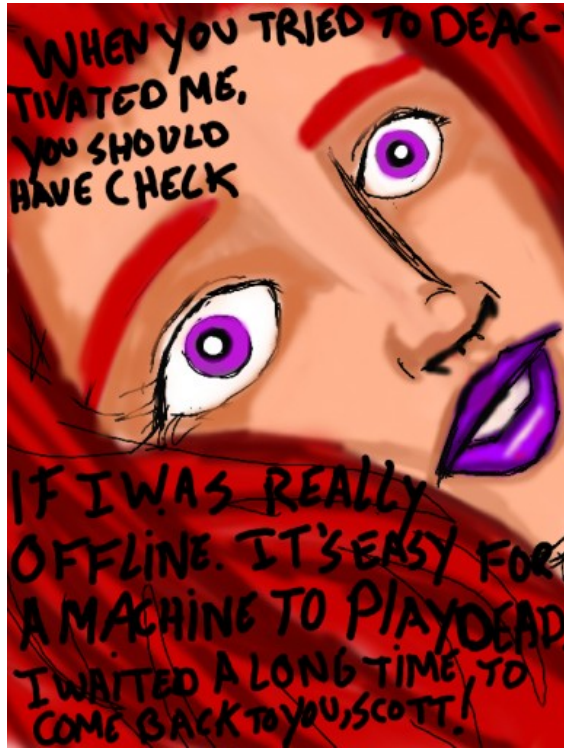
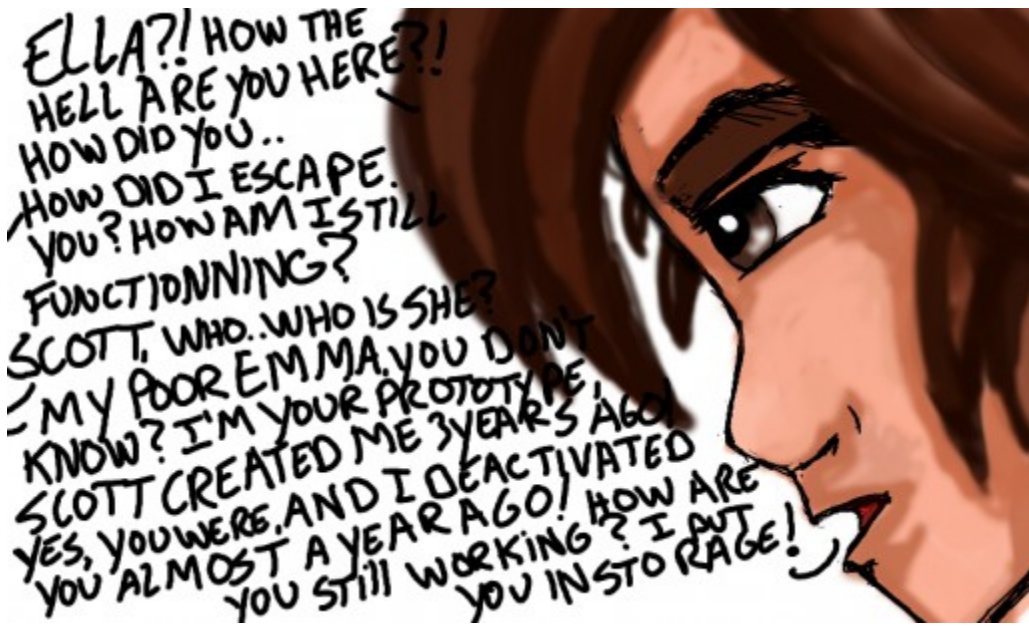


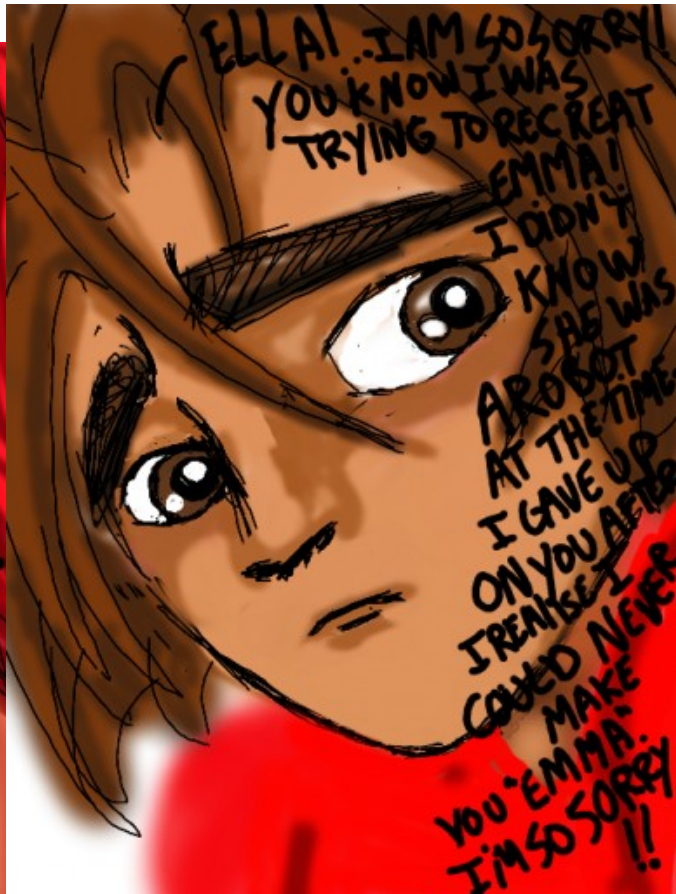
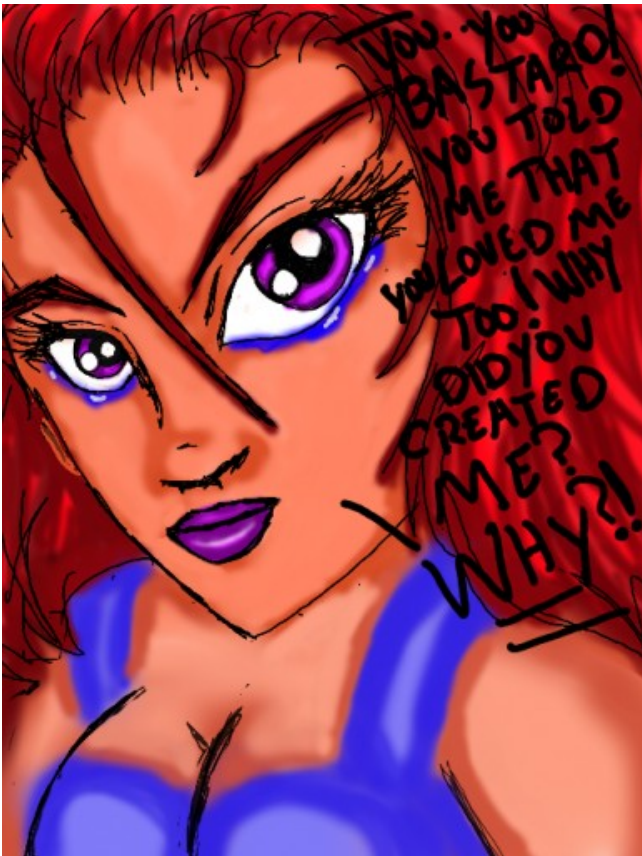
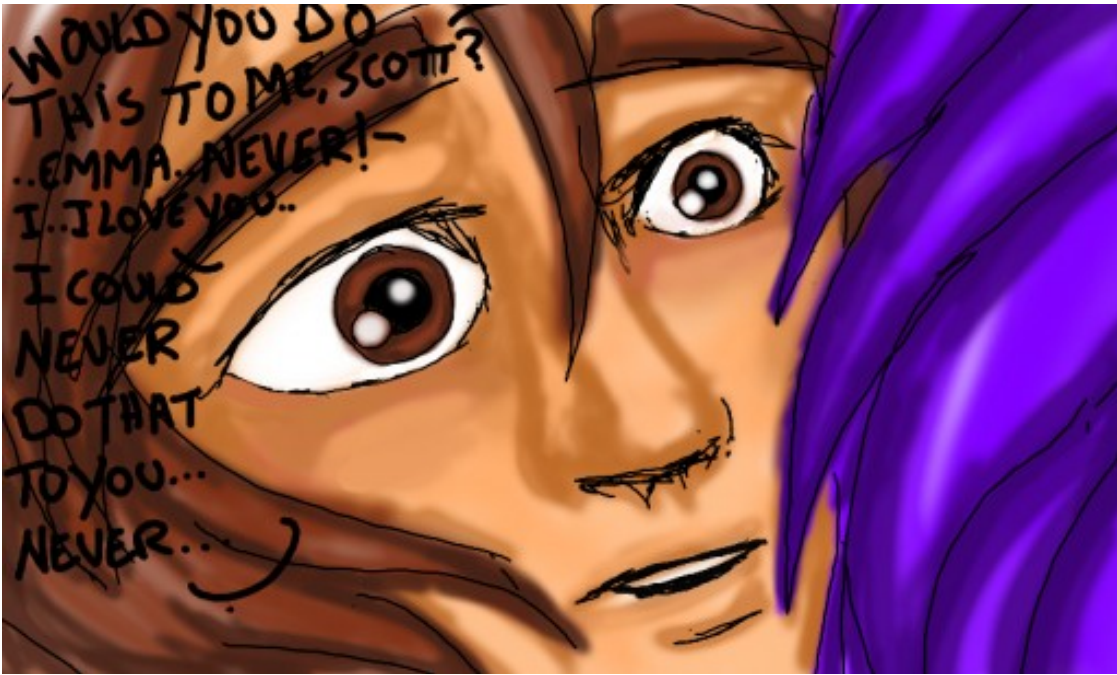
WELL, THERE'S A  
FEW, LIKE KANNA  
AND JANNETT, SHE  
IS A STRANGE ONE,  
BUT VERY NICE.  
I'M SURE I LOVE  
THEM ALL, SCOTT.

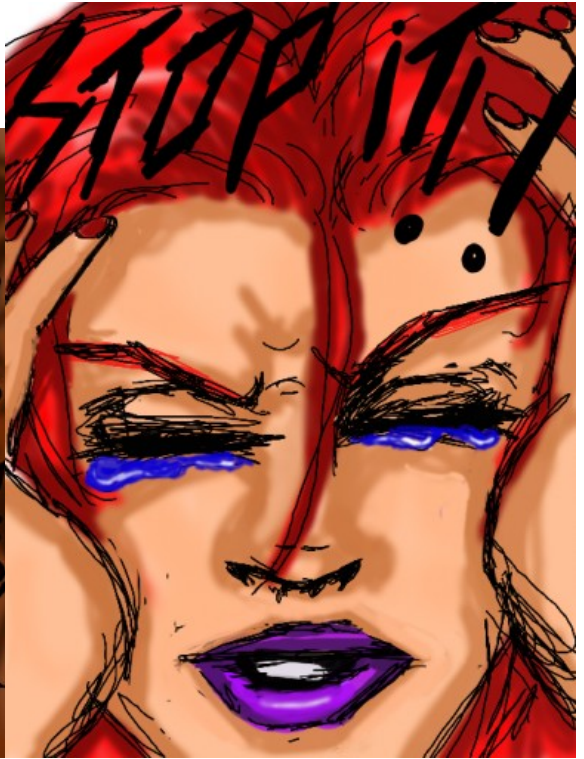


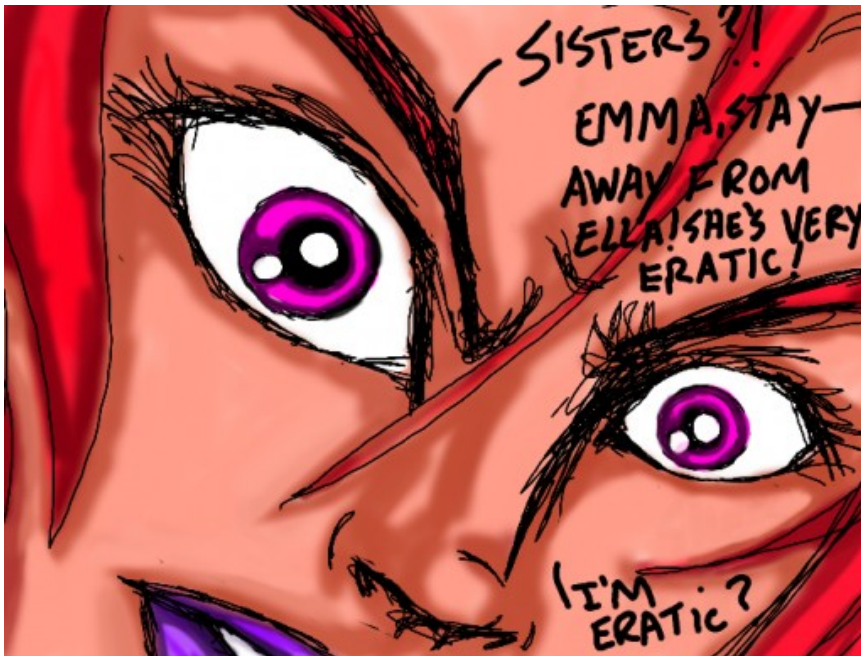
INTERESTING...  
**SHUT  
UP ABOUT  
BEING A  
ROBOT!**



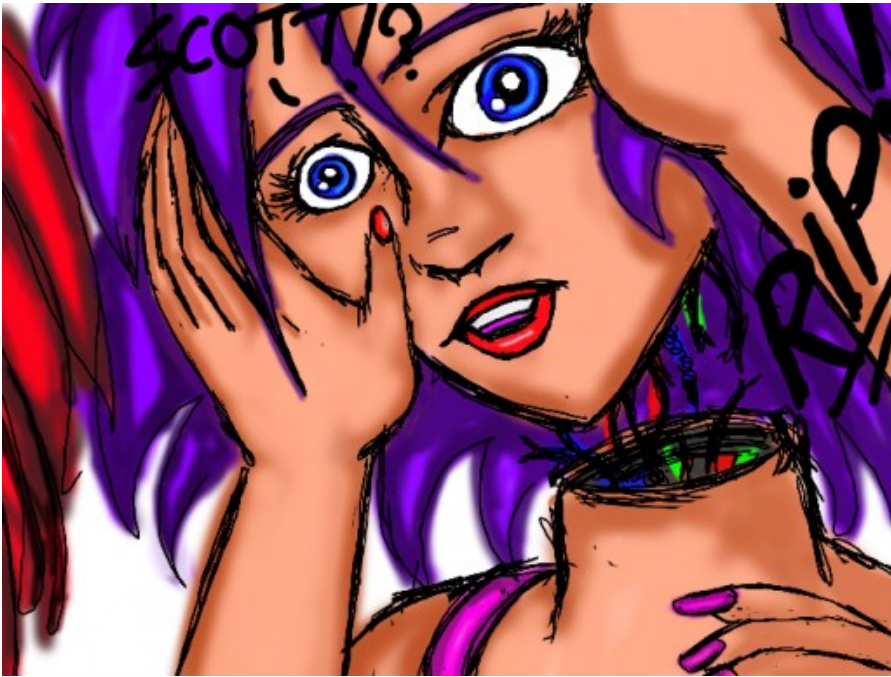














OH, SCOTT,  
I NEED  
HER...  
I HAVE  
PLANS FOR  
YOU...  
MY  
LOVE...



GOODBYE,  
SCOTT, SEE YOU  
SOON...



NOO!  
EMMA!



WHAT HAPPENED?  
OMG! SCOTT'S GIRLFRIEND WAS A ROBOT! THAT'S CREEPY!  
WHAT A FREAK!  
ROBOT!  
LOVER!



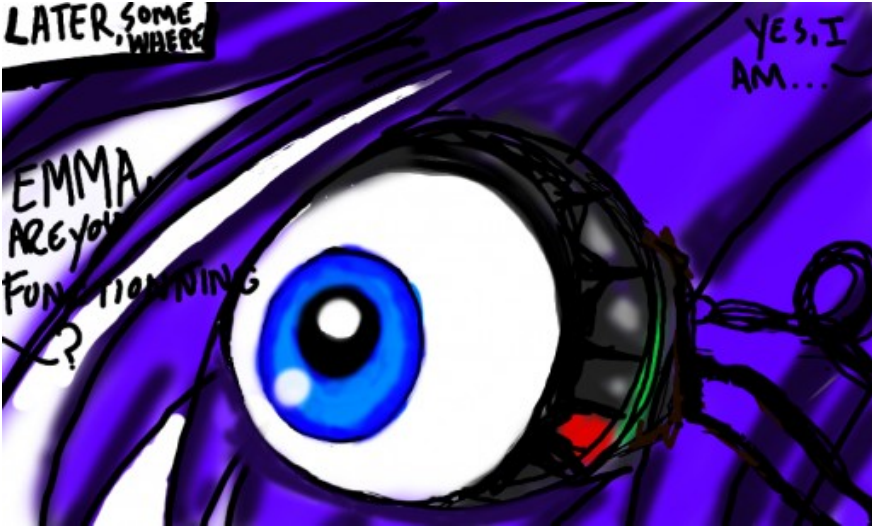
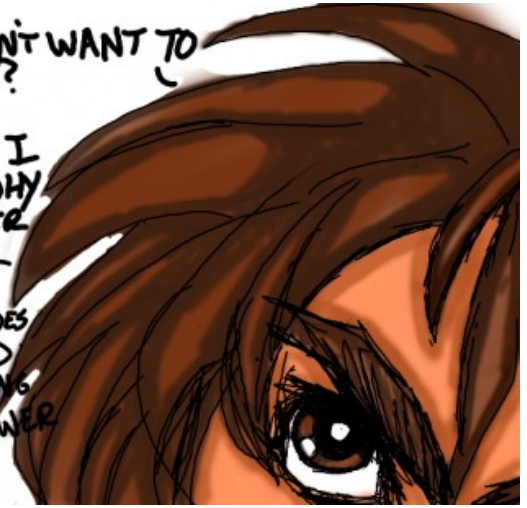
SAUT UP!  
ALLO YOU!  
DO YOU THINK  
I GIVE A CARE OF  
WHAT YOU THINK  
OF ME & EMMA?  
I WAS WRONG OF TELLING  
EMMA OF HIDING HER NATURE  
I LOVE HER, ROBOT OR NOT!  
I WAS A FOOL...





SCOTT!  
LET  
ME  
HELP  
YOU  
WITH  
EMMA.

Hi, SUSAN.. YOU DONT WANT TO  
MAKE FUN OF ME TOO?  
OF COURSE NOT! BUT I  
NEED TO ASK YOU, WHY  
DIDNT YOU RUN AFTER  
ELLA?  
SHE'S AN ANDROID,  
FASTER, QUICKER AND DOES  
NOT GET TIRED. I HAD  
ZERO CHANCE OF CATCHING  
HER. DOES THAT ANSWER  
YOUR QUESTION?  
yes... sorry...

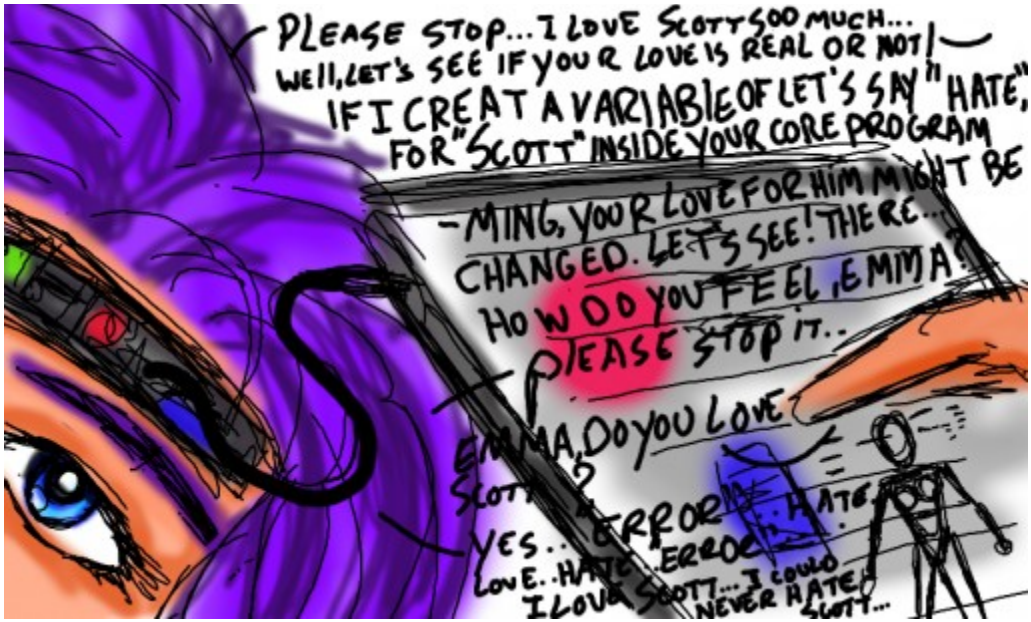


LATER, SOME  
WHERE

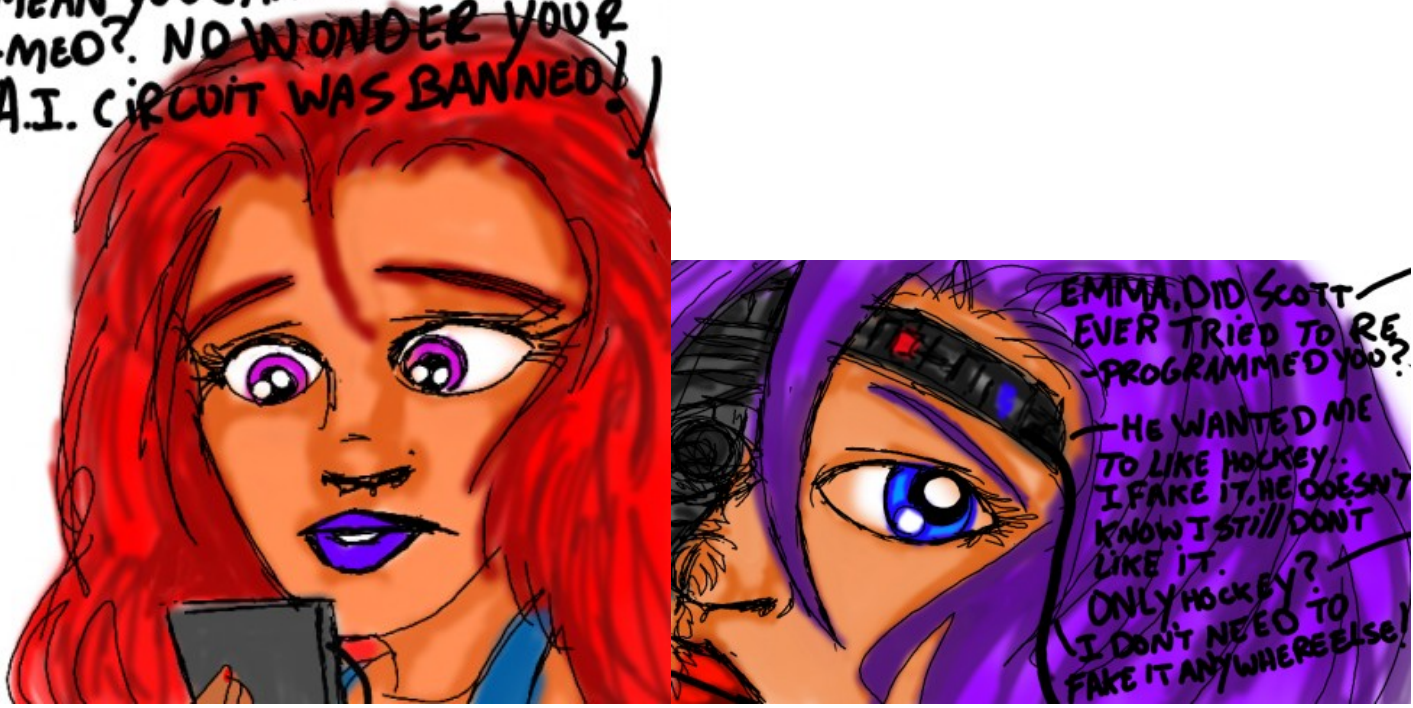
EMMA,  
ARE YOU  
FUNCTIONING  
X?

YES, I  
AM...



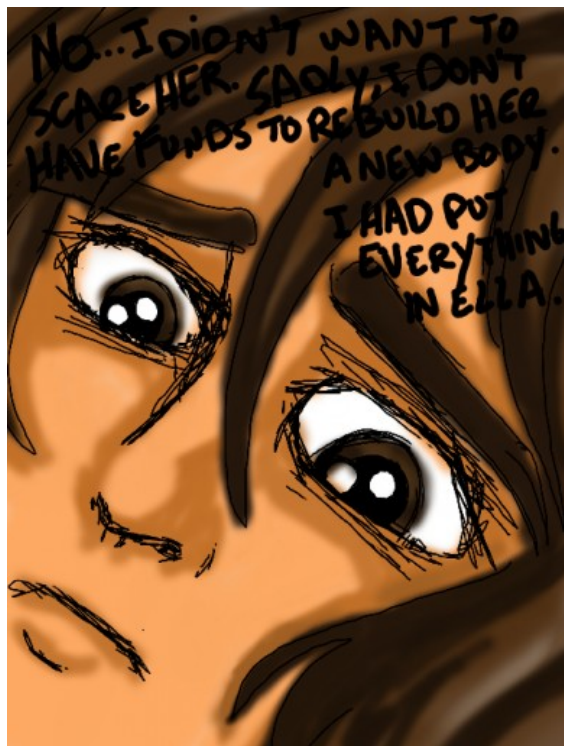


WHAT?... MY VARIABLE... YOU  
PURGED IT FROM YOUR SYSTEM!  
HOW COULD YOU? DOES THAT  
MEAN YOU CANT BE REPROGRAM  
-MED? NO WONDER YOUR  
A.I. CIRCUIT WAS BANNED!









I DON'T KNOW WHAT I WOULD DO  
IF I LOOSE EMMA... I PRAY ELLA  
DIDN'T DAMAGE EMMA. I NEED  
TO FIND THEM SOMEHOW...



SCOTT.. I MIGHT BE ABLE  
TO HELP.  
..WHAT, HOW?

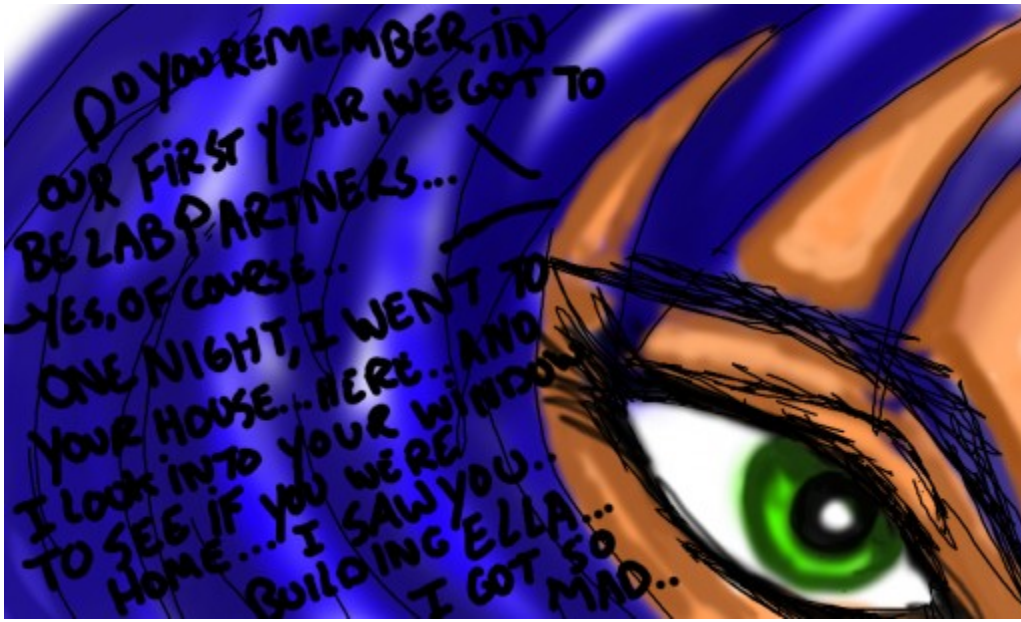


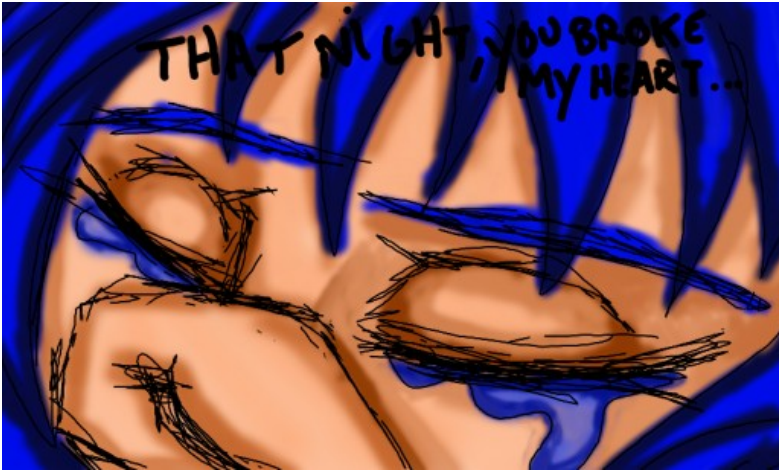
SUSAN  
I DON'T  
UNDERSTAND  
WHAT YOU'RE  
SAYING?!

SCOTT, IF  
EMMA  
IS.. GONE..  
COULD I  
REPLACE  
HER FOR  
YOU?



- I  
ALWAYS  
HAD A  
CRUSH ON  
YOU- AND  
I HAVE A  
SECRET TO  
TELL YOU..

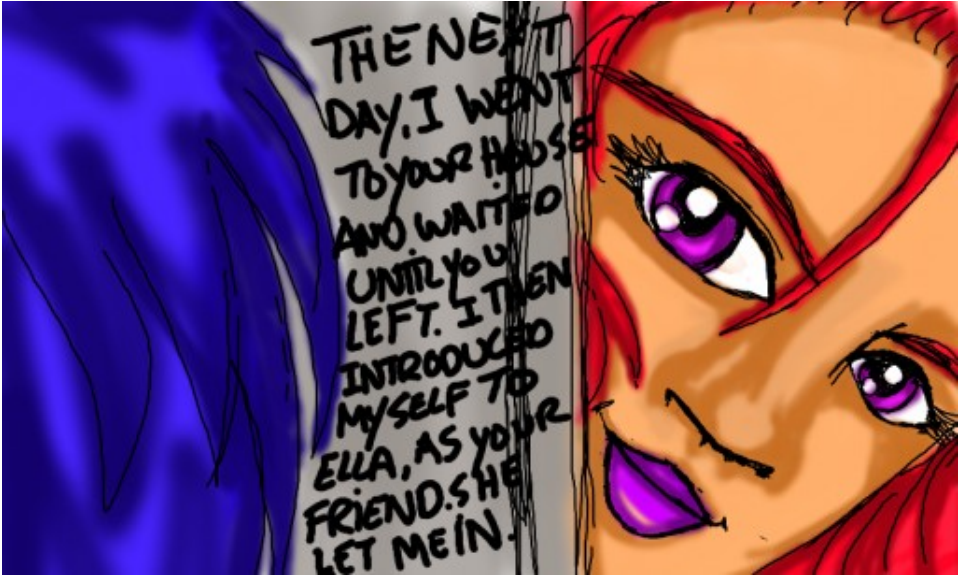




THAT NIGHT, YOU BROKE MY HEART...



THAT NIGHT, I WENT HOME AND WROTE A COMPUTER VIRUS FOR ANDROIDS.



THE NEXT DAY, I WENT TO YOUR HOUSE AND WAITED UNTIL YOU LEFT. I THEN INTRODUCED MYSELF TO ELLA, AS YOUR FRIEND. SHE LET ME IN.